



ZhiXin Deng, Product Sales Manager, ABB Beijing Drive Systems Co., Ltd.

ABB新一代全能型低压交流传动ACS880 创新驱动未来

ABB New Generation Industrial LV AC Drives ACS880 Simplifying your world without limiting your possibilities

自我介绍

Self Introduction

邓志鑫

产品经理

北京ABB电气传动系统有限公司
北京市朝阳区酒仙桥北路甲10号D区1号
邮编: 100015
直线: +86 (10) 58217728
手机: +86 18101196593
E-mail: Zhixin.deng@cn.abb.com



ACS880主要内容

ACS880 Content

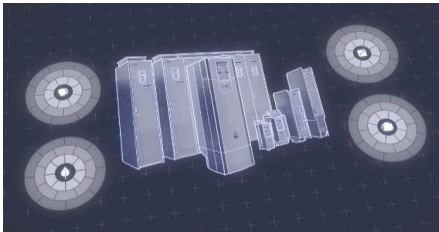


■ 概述



■ 产品选型信息

■ 特点和优势



■ 应用案例

ACS880主要内容

ACS880 Content

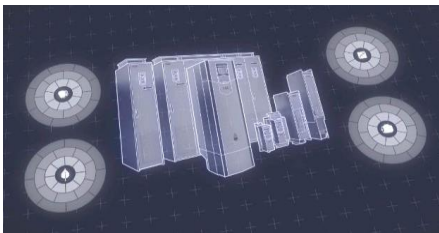


■ 概述



■ 产品选型信息

■ 特点和优势



■ 应用案例

ACS880 产品系列

ACS880 Product Serials



**Wall-mounted
ACS880-01**



**Cabinet-built
ACS880-07**

Single-drives



Multi Cabinet

Multi-drives



ACS880-04



**Inverter units
R1i to R7i**



**IGBT supply module
R8i & LCL line filter**

Drive-modules

ABB工业级传动的发展历程

ABB Industrial Drives Development



First SAMI order in 1975

Sawmill in Finland

Three 350 kVA / 500 V units

All-compatible
drives architecture
Enhanced DTC

Compact design

Direct Torque Control (DTC)

First ABB industrial drives

SAMI

ACS600

ACS800

ACS880



ACS880: 2010年开始在欧洲率先发布并领航销售

ACS880 start from Europe in Year 2010



Introduction in SPS Fair in Nuremberg November 23-25 2010

ACS880: 2013年5月正式引入中国市场

ACS880 Formal Marketing Introduction in China in May,2013



AW Event in May-2013, BJ of CHINA

ACS880-01/04 从2014年开始在中国已经进入销售状态

ACS800-01/04 Drive in Actual Sales from Year 2014 in China



ACS880-01(R1-R9)

0.75kW~250kW



ACS880-04(R10-R11)

250kW~710kW

ACS880主要内容

ACS880 Content

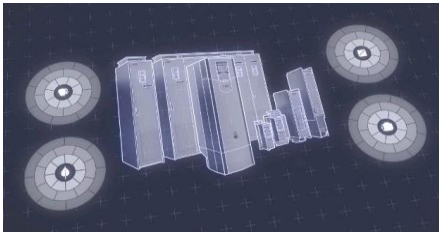


■ 概述

■ 产品选型信息

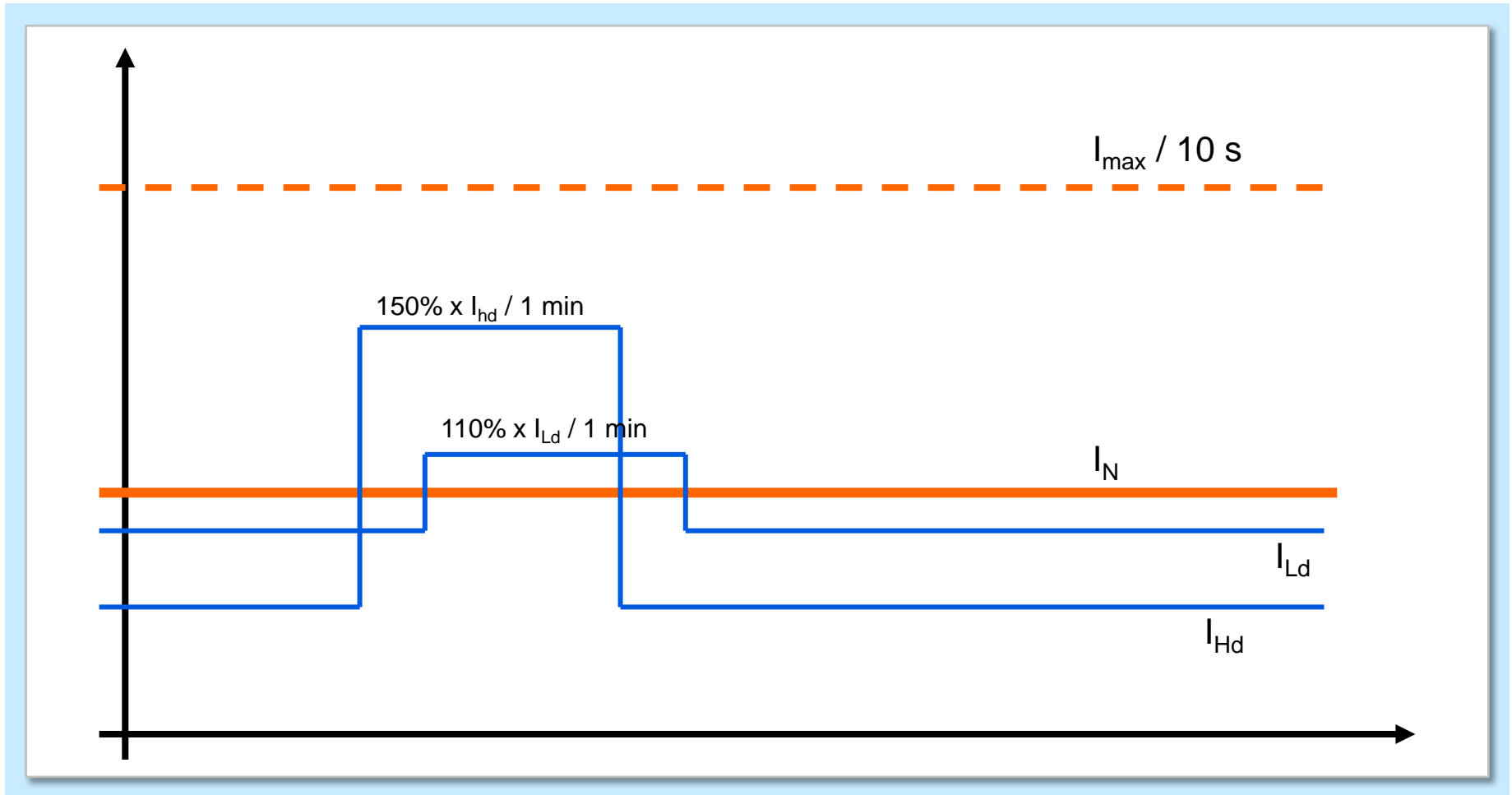
■ 特点和优势

■ 应用案例



额定值、轻载和重载

Normal Rating, Light Load and Heavy Load



ACS880-01 壁挂式传动包含R1到R9共九种外型尺寸

ACS880-01 Wall-Mounted Drive (R1 to R9)



ACS880-01 标准配置

ACS880-01 Standard Configuration



- 壁挂式安装
- IP21防护等级
- 助手型控制盘
- 内置进线电抗器
- 基本控制程序
- 安全力矩中断STO
- 进线接线盒
- 制动斩波器(R1-R4标配)
- 涂层电路板
- 快速安装指导
- 一张包含所有相关电子版手册的CD和最新版的纸质手册

ACS880-01 与 ACS800-01 对比

ACS880-01 vs. ACS800-01 Comparison

963 mm

405 mm



R1

R2

R3

R4

R5

R6

R7

R8

R9

尺寸、重量和噪音 ACS800 R2-R8

高度：相同
宽度：窄
深度：相同
重量：轻

矮
窄
薄
轻

相同
窄
薄
轻

矮
窄
薄
轻

矮
窄
薄
轻

矮
窄
薄
重

相同
窄
薄
轻

高*
相同
薄
重

矮
窄
薄
轻

H1 带电缆接线盒； H2 无电缆接线盒。

外形规格	IP 21					IP 55					噪音
	H1 mm	H2 mm	宽度 mm	深度 mm	重量 kg	高度 mm	宽度 mm	深度 mm	重量 kg		
R2	405	320	165	226	9	528	263	263	16	62	
R3	471	420	173	265	12	528	263	273	18	62	
R4	607	460	240	274	26	774	377	377	32	62	
R5	739	602	265	286	37	775	377	308	50	65	
R6	880	700	300	399	67	923	420	420	77	65	

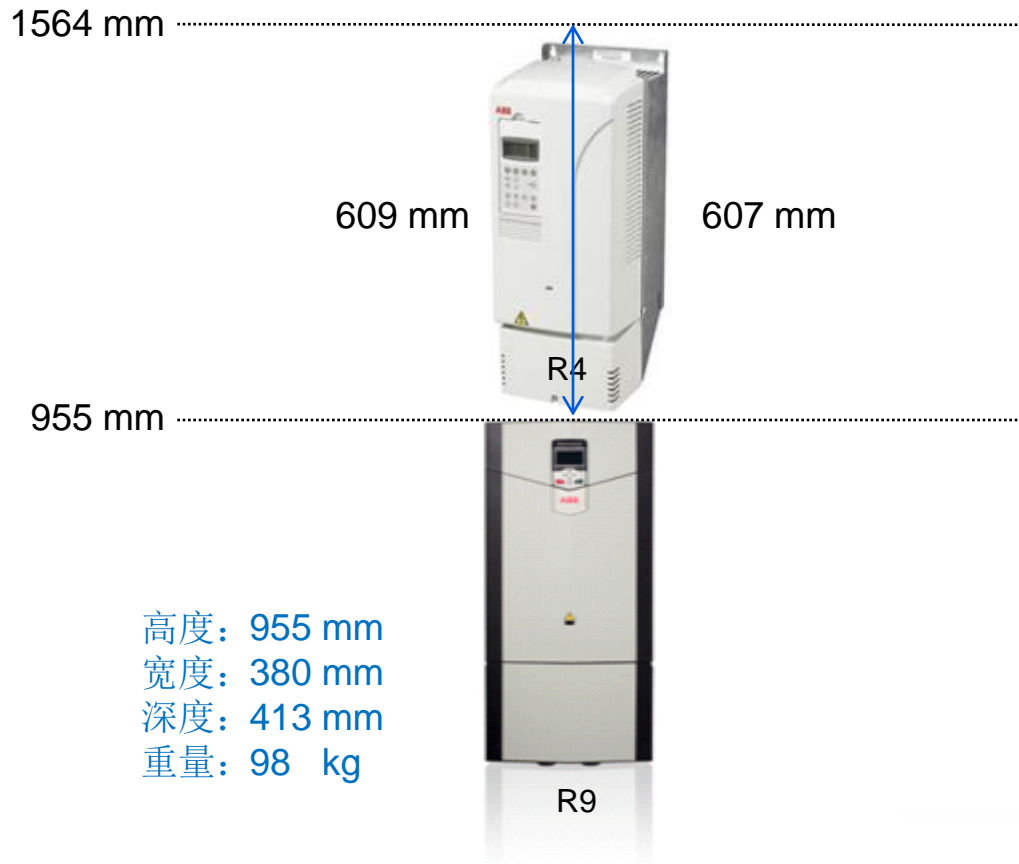
Frame size	IP 00								Weight kg	Noise dB
	Busbars on the long side (bookshelf)				Busbars on the short side (flat)					
	H mm	W1 mm	W2 mm	D mm	H mm	W3 mm	W4 mm	D mm		
R7	1121	334	427	473	1181	525	631	259	100	71
R8	1564	415	562	568	1596	607	779	403	200	72

不帶接线盒的高度比
ACS800矮200mm

不带接线盒的高度比
ACS800矮200mm

ACS880-01 200kW & 250kW 与 ACS800-04 比较

ACS880-01 200kW & 250kW vs. ACS800-04 Comparison



高度: 955 mm
宽度: 380 mm
深度: 413 mm
重量: 98 kg



高度: 1564 mm
宽度: 562 mm
深度: 571 mm
重量: 200 kg

ACS880-04 R10和R11 单传模块产品信息

ACS880-04 R10&R11 Product Information



ACS880-04 R10和R11 单传模块额定值和技术数据

ACS880-04 R10&R11 Ratings and Technical Data

$U_N = 400 \text{ V}$ (range 380 to 415 V). The power ratings are valid at nominal voltage 400 V (200 to 1400 kW).

Nominal ratings			Light-overload use		Heavy-duty use		Noise level	Heat dissipation	Air flow	Type designation	Frame size
I_N A	I_{max} A	P_N kW	I_{Ld} A	P_{Ld} kW	I_{Hd} A	P_{Hd} kW	dB(A)	W	m³/h		
6-pulse											
505	560	250	485	250	361	200	72	5602	1200	ACS880-04-505A-3	R10
585	730	315	575	315	429	250	72	6409	1200	ACS880-04-585A-3	R10
650	730	355	634	355	477	250	72	8122	1200	ACS880-04-650A-3	R10
725	1020	400	715	400	566	315	72	8764	1200	ACS880-04-725A-3	R11
820	1020	450	810	450	625	355	72	9862	1200	ACS880-04-820A-3	R11
880	1100	500	865	500	725 ¹⁾	400	71	10578	1420	ACS880-04-880A-3	R11

$U_N = 500 \text{ V}$ (range 380 to 500 V). The power ratings are valid at nominal voltage 500 V (200 to 1400 kW).

Nominal ratings			Light-overload use		Heavy-duty use		Noise level	Heat dissipation	Air flow	Type designation	Frame size
I_N A	I_{max} A	P_N kW	I_{Ld} A	P_{Ld} kW	I_{Hd} A	P_{Hd} kW	dB(A)	W	m³/h		
6-pulse											
460	560	315	450	315	330	200	72	4403	1200	ACS880-04-460A-5	R10
503	560	355	483	315	361	250	72	5602	1200	ACS880-04-503A-5	R10
583	730	400	573	400	414	250	72	6409	1200	ACS880-04-583A-5	R10
635	730	450	623	450	477	315	72	8122	1200	ACS880-04-635A-5	R10
715	850	500	705	500	566	400	72	8764	1200	ACS880-04-715A-5	R11
820	1020	560	807	560	625	450	71	9862	1420	ACS880-04-820A-5	R11
880	1100	630	857	560	697 ²⁾	500	71	11078	1420	ACS880-04-880A-5	R11

$U_N = 690 \text{ V}$ (range 525 to 690 V). The power ratings are valid at nominal voltage 690 V (250 to 2200 kW).

Nominal ratings			Light-overload use		Heavy-duty use		Noise level	Heat dissipation	Air flow	Type designation	Frame size
I_N A	I_{max} A	P_N kW	I_{Ld} A	P_{Ld} kW	I_{Hd} A	P_{Hd} kW	dB(A)	W	m³/h		
6-pulse											
330	480	315	320	315	255	250	72	4403	1200	ACS880-04-330A-7	R10
370	520	355	360	355	325	315	72	5602	1200	ACS880-04-370A-7	R10
430	520	400	420	450	360 ¹⁾	350	72	6409	1200	ACS880-04-430A-7	R10
425	520	400	415	400	360	355	72	6409	1200	ACS880-04-425A-7	R11
470	655	450	455	450	415	400	72	8122	1200	ACS880-04-470A-7	R11
522	655	500	505	500	455	450	72	8764	1200	ACS880-04-522A-7	R11
590	800	560	571	560	505	500	71	9862	1200	ACS880-04-590A-7	R11
650	820	630	630	630	571 ¹⁾	560	71	10578	1420	ACS880-04-650A-7	R11
721	820	710	705	630	571 ¹⁾	560	71	10578	1420	ACS880-04-721A-7	R11

ACS880主要内容

ACS880 Content

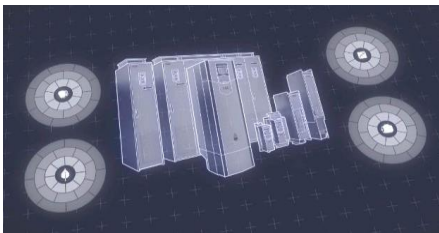


■ 概述



■ 产品选型信息

■ 特点和优势



■ 应用案例

ACS880 vs. ACS800 性能对比

ACS880 vs. ACS800 Matrix



	Industrial 工业级传动	
Performance Items 性能指标	ACS880	ACS800
Torque reference handling 转矩参考处理程序	250 us	6 ms
Speed reference handling 速度参考处理程序	500 us	6 ms
Encoder (speed / position data) 编码器 (速度/位置数据)	250 us	2 ms
Analogue I/O (standard) 模拟量I/O(标配)	500 us	6 ms
Analogue I/O (option modules) 模拟量I/O(可选插件)	2 ms	12 ms
Digital I/O (Standard) 数字量I/O(标配)	500 us	6 ms
Digital I/O (option modules) 数字量I/O(可选插件)	2 ms	12 ms
Fieldbus reference handling 总线参考处理程序	0.25 / 0.5 / 2 / 10 ms *	2 ms
D2D reference handling 传动到传动连接处理程序	2 ms	-
M/F link referencfe handling (fiber optic comm) 主/从参考处理程序(光纤通讯)	2 ms	2 ms

* Usable time level depends on other CPU load, e.g. options, used application SW, etc

ACS880的产品特点和优势

ACS880 Features & Advantages & Benefits



All-compatible drives architecture

ACS880全系列采用全兼容式的传动结构平台

Compatible with all types of industries & applications

适用于所有行业 and 所有应用的工业级全能型传动产品

Enhanced DTC

采用增强型DTC控制方式的顶级高性能传动产品

Enhanced configuration and function than ACS800

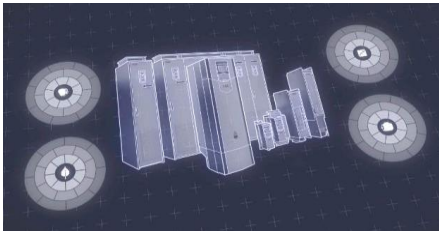
较之ACS800具有更丰富的配置和更强大的功能

Total System Approach for energy efficiency

全方位的系统解决方案使用户感受到巨大的节能成效

The most reliable and advanced safety function

依靠最先进的安全技术满足各类最新标准对安全性的要求



ACS880全系列具有统一的中央控制平台和公共的通用可选件

Common architecture across the drives portfolio

Same control panel

- Easy navigation and monitoring
- Harmonized parameters
- Built-in USB connection to the PC tool

Same Programming tool

Same PC tool

- Quick and harmonized access to drive settings
- Flexible monitoring capabilities
- Diagnostics support with one mouse click

Universal connectivity

- Same fieldbus, speed feedback and I/O modules
- Harmonized connections



Remote access

- Web server, data logging, Control panel, Parameter browsing (read + write)
- OPC UA server, EIA-232, 3 pcs EIA-485, 2 pcs Ethernet, USB, SD-

Compact and practical design

- Lighter and smaller units
- Harmonized connections
- Built-in safety functions

Learn it once, use it everywhere!

ACS880: 适用于全领域的ABB新一代全能型变频器

ACS880: New Generation ABB All-compatible Drive



- 所有行业
- 所有应用
- 所有现场总线协议
- 所有交流电机
- 各类环境
- 所有防护等级

Compatible with all types of industries & applications
适用于所有行业 and 应用的工业级全能型传动

采用增强型DTC控制方式的顶级高性能低压交流传动

Enhanced DTC

- **Improved DTC modulator** 增强的DTC内核调节器
 - Higher output frequencies (500Hz)
 - Higher switching frequencies (up 16kHz)
 - Fast Reference Chain(from 10ms to 2ms)
 - 6- step modulation to get full output voltage
- **Motor model** 更先进的电机控制模型
 - One drive and one firmware for various motors(IM, PM, High Speed)
- **Improved Motor identification** 改进的电机辨识功能
 - Especially in standstill mode
 - Add Motor model database inside
- **Better open loop performance** 更优的开环性能
 - High starting torque, good torque linearity
 - Improved operation at zero frequency(Stability)
 - Permanent magnet motors can even be positioned with reasonable accuracy without encoder



较之ACS800具有更丰富的配置和更强大的功能 Enhanced configuration and function than ACS800



HW

I/O



1. Actual values	
3. Input references	
4. Warnings and faults	
5. Diagnostics	40. Process PID set 1
6. Control and st	41. Process PID set 2
7. System info	43. Brake chopper
10. Standard DI, R	44. Mechanical brake control
11. Standard DIO	45. Energy savings
12. Standard AI	46. Monitoring/scaling settings
13. Standard AO	47. Data storage
19. Operation mod	49. Panel port communication
20. Start/stop/dire	50. Fieldbus adapter (FBA)
21. Start/stop mod	51. FBA A settings
22. Speed referen	52. FBA A data in
23. Speed referen	53. FBA A data out
24. Speed referen	60. DDCS communication
25. Speed control	90. Feedback selection
26. Torque referen	91. Encoder module settings
28. Frequency ref	92. Encoder 1 configuration
30. Limits	93. Encoder 2 configuration
31. Fault function	95. HW configuration
33. Maintenance t	96. System
	97. Motor control
	98. User motor parameters
	99. Motor data

SW

HMI



ACS880 通用软件架构

ACS880 Common Firmware Structure

ACS800

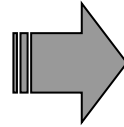
Standard control program
Standard control program PMSM
System control program
System control program PMSM
Multiblock control program

+

Benefits of ACS850 software

+

New functionality



ACS880

Primary control program

+ Control Builder Plus IEC programming
(based on CoDeSys)

- One common firmware over the whole ACS880 product family
- Precise speed and torque control for all applications – DTC with AM and PM motors



ACS880 提升软件架构

ACS880 Crane Firmware Structure



+N697 Crane control sw (FI)

+N652 Cranedrive control (SE)

+N816 Antisway control (FI) 防摇

Target is combine all ACS800 series crane functions to be one common crane software



+N5050 Crane control 提升软件

ACS880: 可驱动所有类型电机

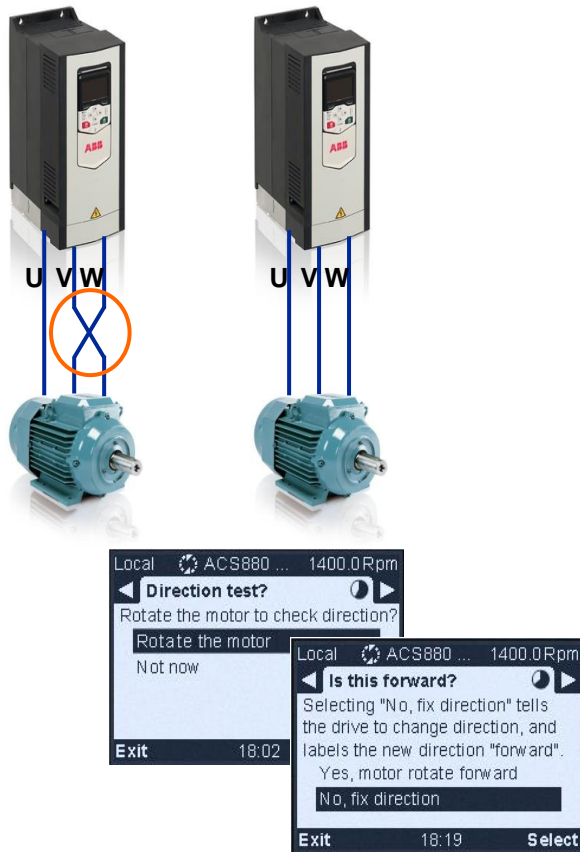
ACS880: Versatile motor control as standard

- 标配的基本软件 **Primary Control Program**
 - 交流异步电机 **Induction**
 - 永磁同步电机 **Permanent magnet**
- 同步磁阻电机软件 (+N7502)
 - 同步磁阻电机 **Synchronous reluctance**



ACS880 电机换相功能

ACS880 Motor Phase Inversion



■ Problem:

- Incorrectly connected motor cables
- Incorrect direction of rotation

■ Solution: Motor phase inversion

- One parameter setting
- Included in basic start-up assistant *

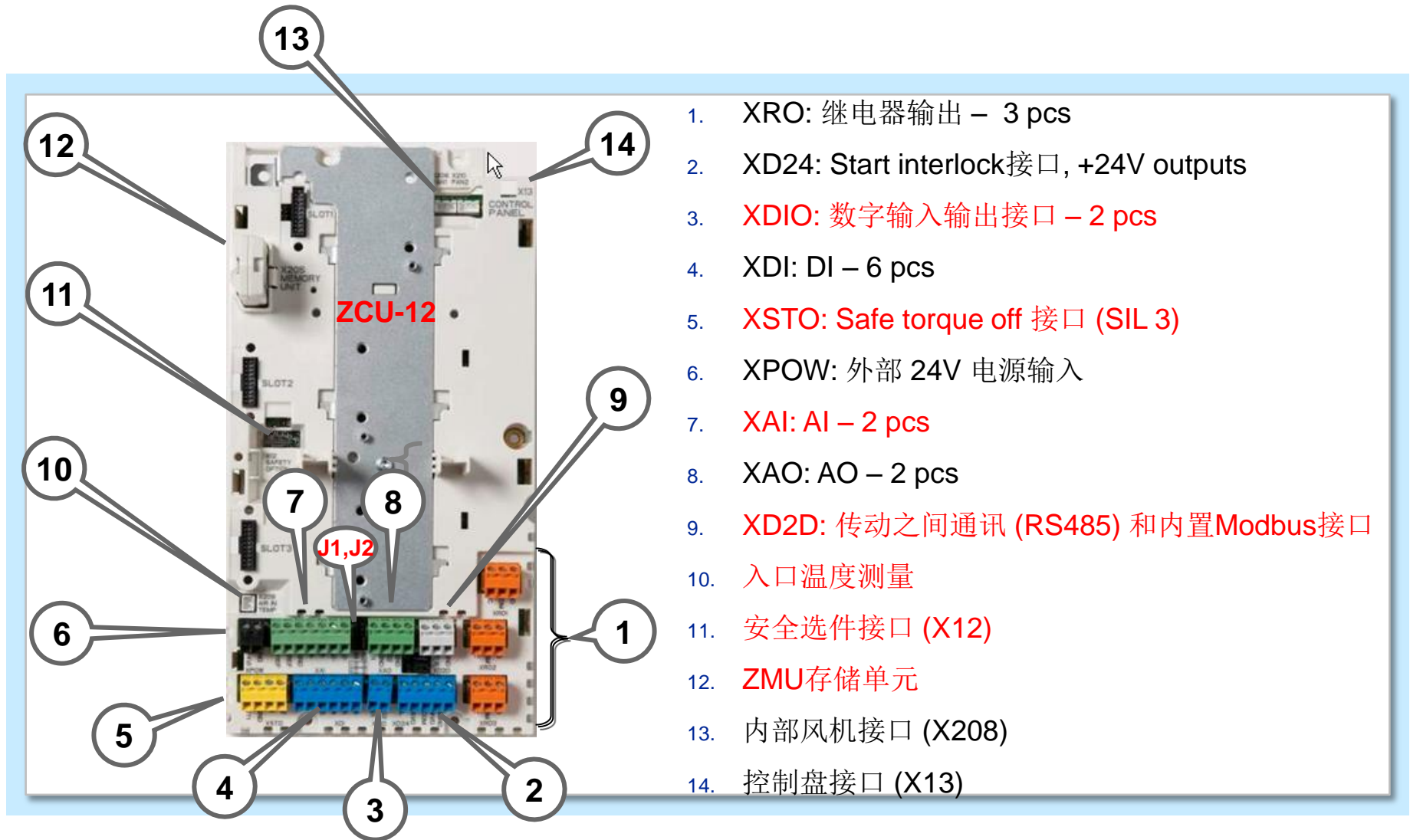
■ Benefit:

- Quickly correct rotation direction
- Useful with thick motor cables

Features marked with an asterisk (*) will be available later

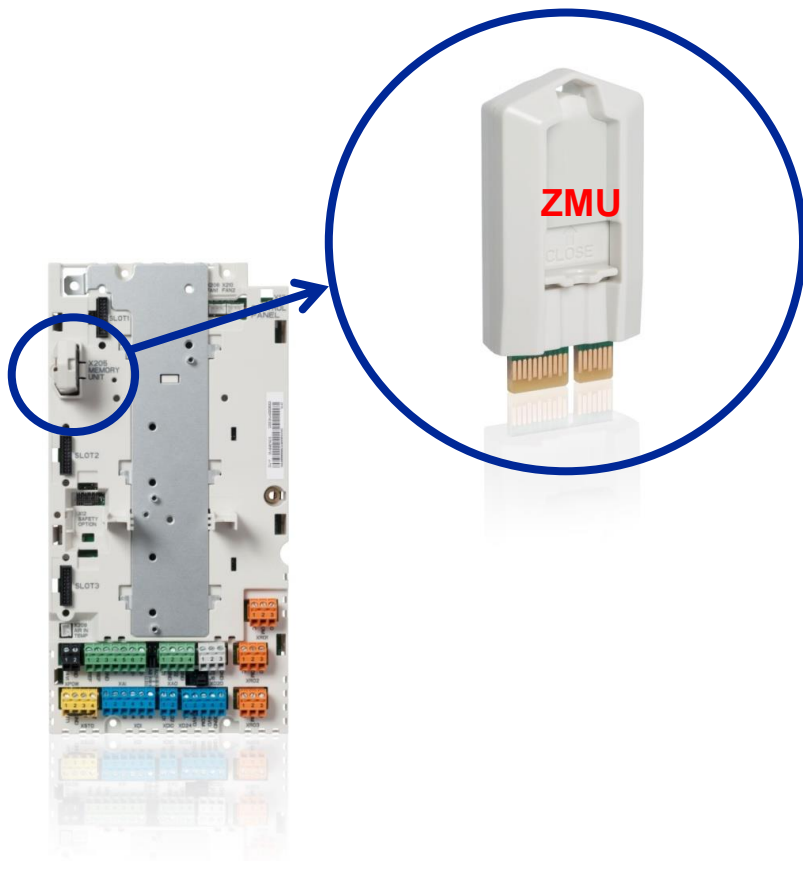
ACS880 控制板标准接口

ACS880 Standard Control Connections



ACS880 可拆卸式存储单元

ACS880 Removable Memory Unit



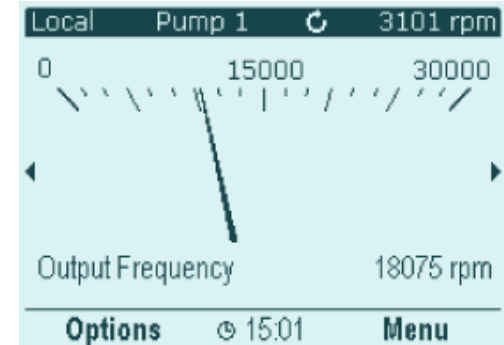
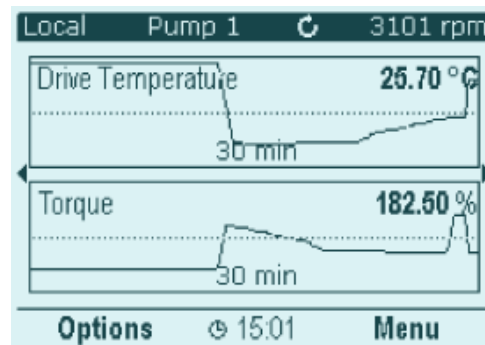
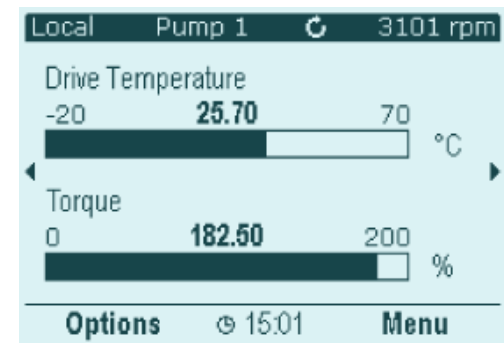
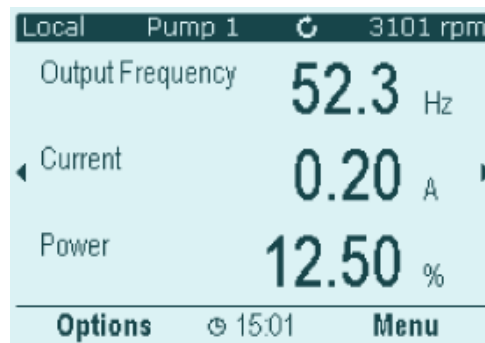
- 存储内容
 - Firmware 固件
 - Hardware Info 硬件信息
 - Para.setting 参数设置
 - Programming 应用编程
 - Interface 界面配置
- 方便高效
 - 现场更换方便
 - 软件升级更加简便
 - 减少下载软件时间

ACS880 全新的控制盘

ACS880 New Control Panel (ACS-AP-I)



- **Chinese Language** 中文语言
- **USB Connection** USB接口
- **Real Clock** 实时时钟



ACS880 控制盘组合键功能

ACS880 Control Panel Key Combinations



■ 截屏

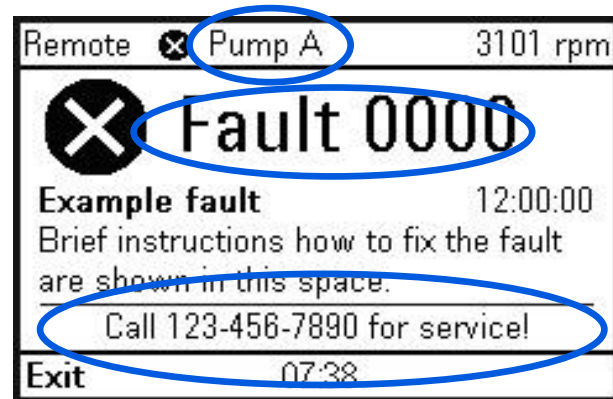
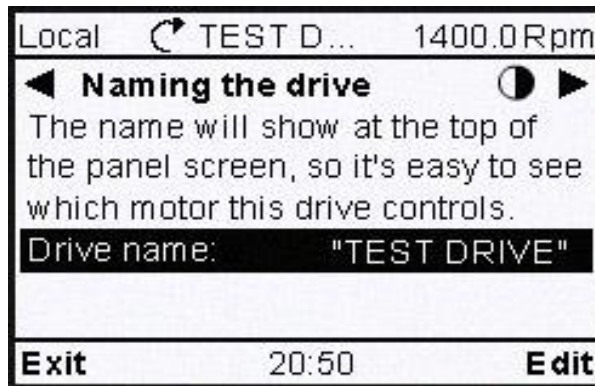
■ 恢复参数默认值

ACS880 控制盘文字编辑

ACS880 Control Panel Text Editor

■ 可编辑信息:

- 传动名称
- 外部故障名称
- 联系人信息



ACS880 与 ACS800 控制盘比较

ACS880 Vs. ACS800 Control Panel Comparison



ACS880 入口温度测量

ACS880 Incoming Air Temperature Measurement



- 测量变频器周围的环境温度, 绘制温度曲线, 了解变频器运行情况

Local	rpm demo	1437.4 rpm
Ambient temperature		19 °C
60		
-10		
-40		15 min
Options	14:15	Menu

- 实现不同温度检测点的故障保护机制
 - IGBT温度报警
 - 环境温度报警



ACS880 闭环风机控制

ACS880 Closed Loop Fan Control



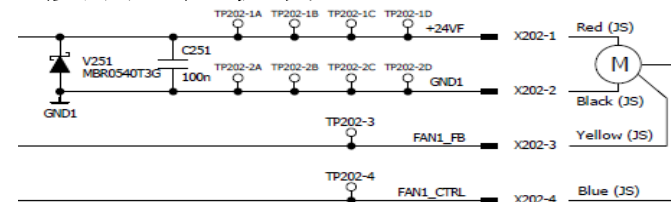
调速风机



四线制插接口

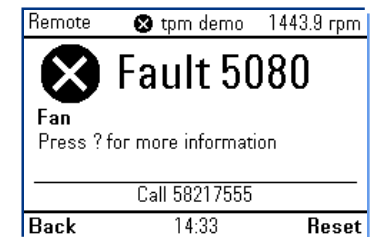
■ 调速节能

- 冷却风机按照变频器运行情况和散热器温度调整风机转速



■ 故障反馈

- 风机短路或者卡住等风机故障，变频器提示故障信息F5080



ACS880 便捷安装

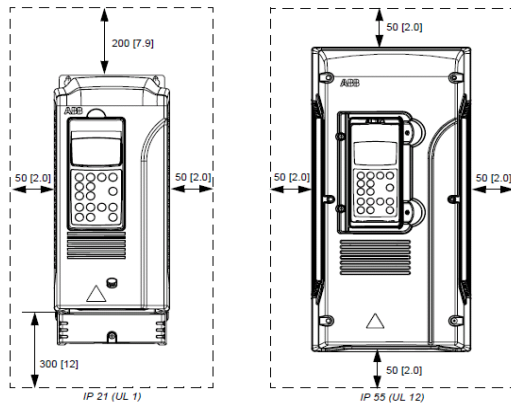
ACS880 Easy Installation

ACS880



- **ACS880 可并排安装**
 - 节省空间
 - 节约成本，方便接线

ACS800



ACS880 控制盘总线

ACS880 Panel Bus

- 最多32台模块连接在控制盘总线上，通过控制盘配置各个模块的地址和名称

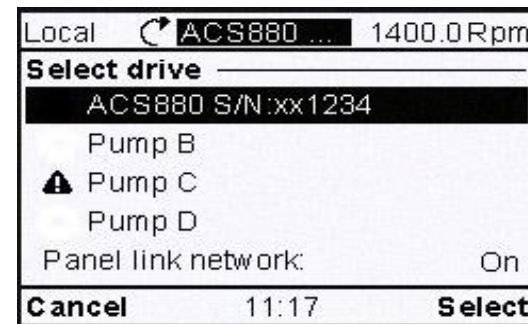
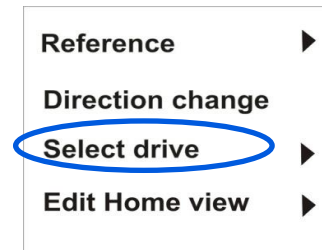


USB

RS485



Panel or other
USB/RS485
converter



ACS880 全新的调试和编程工具

ACS880 PC Tool

- Drive Composer

- Two versions 2个版本:

- a free version for basic start-up and maintenance

- 基本版本（免费）：可实现基本的单机调试、参数设置功能

- a professional version for advanced drive configuration and monitoring

- 专业版本：可实现更高级的传动配置和监控功能

- Parameter conversion tool (converts ACS800 to ACS880)

- 专业版本支持将ACS800参数转换为ACS880参数

ACS880采用整体的系统解决方案实现能源效率

ACS880 Energy-Save



UNIVERSITEIT GENT

iwT

Xiaoj

howest
University College West Flanders
Member of the Ghent University Association

ABB
ACS 880 launch

MADE IN
WEST-
VLAANDEREN

**Energy efficiency:
A total system approach**

CONTACT
Kurt Stockman
Steve Dereyne
University College West Flanders
Master Electromechanics
Ghent University Association
kurt.stockman@howest.be
steve.dereyne@howest.be

**Built-in energy
Optimizer ensures maximum torque
per ampere**

节能优化功能
确保每安培电能的最大有效利用

**Built-in energy
Efficiency information
helps analyze & optimize
energy use**

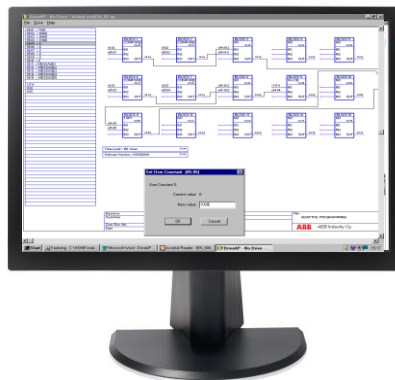
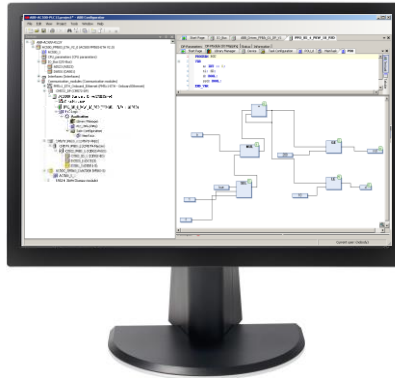
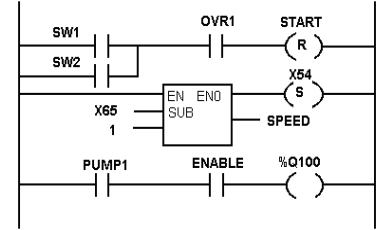
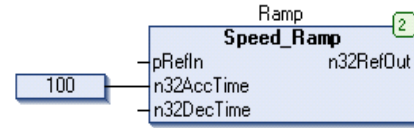
内置的节能信息帮助用户
直观感受巨大的节能成效

**Six-step energy
Appraisal to investigate
the energy saving potential**

节能审计

ACS880 可编程功能

ACS880 Programmability



Automation Builder - CODESYS

- 具备PLC编程的强大功能
- 除了最初编程的源文件，其他人不能打开和查看该程序
- **Automation Builder 1.1** 基本版免费从 **ABB官网**下载

www.abb.com/automationbuilder

Adaptive programming

- **20 block** programming allowing minor modifications
- Standard feature

ACS880 功能性安全

ACS880 Functional Safety

Drives with safe torque off (STO)

	Drive type	Integrated STO	SS1	SBC	SLS	SSE	SMS
Industrial drives	ACS880	SIL 3/PL e	•	•	•	•	•
	ACS800	SIL 2/PL d •	• •	○	• •	• • 1)	• • 2)
Machinery drives	ACS355	SIL 3/PL e	○	○	○	○	○
Industry-specific drives	ACS850	SIL 3/PL e	○	○	○	○	○
	ACQ810	SIL 3/PL e	○	○	○	○	○
General purpose drives	ACS580	SIL 3/PL e	○	○	○	○	○
Motion control drives	ACSM 1	SIL 3/PL e	○	○	○	○	○
	MicroFlex e150	SIL 3/PL e	○	○	○	○	○

• Available as an integrated drive option.

•• Available as an option for cabinet-built drives (+QXXX).

○ Safety functions are possible, with external safety devices connected to the STO in the drive.

1) SSE is implemented as category 1 stop function.

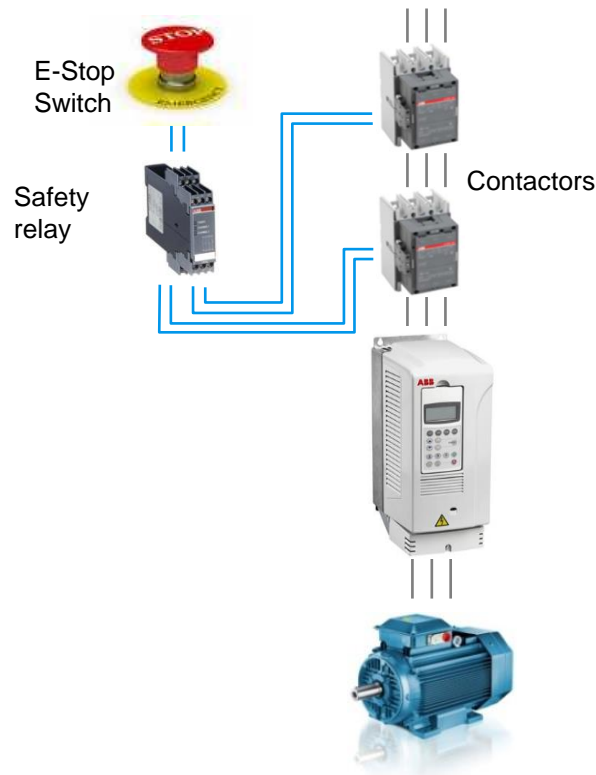
2) SMS is implemented as a variant of SLS.

You can also build safety functions to the drives without safe torque off (STO), by using external safety devices such as contactors/circuit breakers and safety relays.

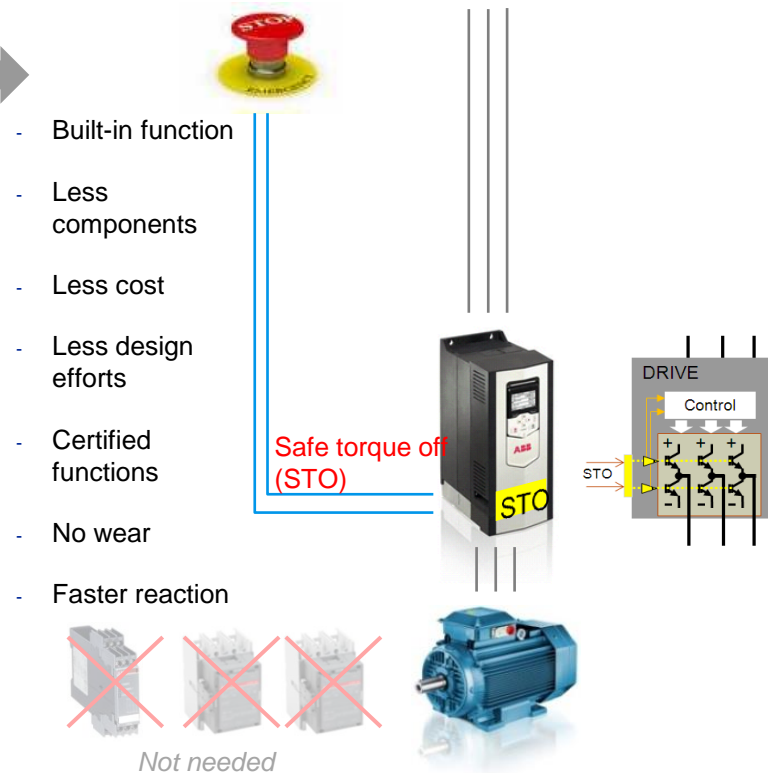
ACS880 标配安全力矩中断功能

ACS880 STO

Systems external to drive (traditional)



Integrated safety functions (contemporary)



集成的安全特性保证设备安全、节省空间、简化接线 Safety Features Improve Machine Safety & Save Space

- Complies with the requirements of the European Union Machinery Directive 2006/42/EC

符合欧盟机械指令2006/42/EC的要求

Safety function	Example applications
STO – safe torque-off (FSO-11 module controls drive STO)	<ul style="list-style-type: none">• Emergency stop, category 0• Prevention of unexpected start-up
SSE – safe stop emergency	<ul style="list-style-type: none">• Emergency stopping, category 0 / category 1
SS1 – safe stop 1	<ul style="list-style-type: none">• Safe process stops, end of travel ramp stop
SBC – safe brake control	<ul style="list-style-type: none">• Safe mechanical holding of loads when drive is off
SLS – safely-limited speed	<ul style="list-style-type: none">• Safe crawl speed for specific work cycles
SMS – safe maximum speed	<ul style="list-style-type: none">• Ensuring structural speed is not exceeded
Safe outputs	<ul style="list-style-type: none">• Indicating safety function status, actuating auxiliary devices



ACS880 满足各类安全标准的要求

ACS880 Safety Certificate



TÜV NORD

Certificate

No. SLA-0055/10, V. 1.0

TÜV NORD Systems GmbH & Co. KG hereby certifies

ABB Oy
Hiomotie 13
FI-00381 Helsinki
Finland

that the realization of the safety functions "Safe Torque Off - STO"
in the ABB high performance machinery drives

Type ACS880-01

are capable for safety related applications up to SIL 3, SILcl 3 and PL e and meet the requirements listed in the following standards

- IEC 61508 part 1:2010; part 2:2010; capable up to SIL 3
- ISO 13849-1:2006; capable up to PL e (category 3)
- IEC 62061:2005; capable up to SILcl 3
- IEC 61800-5-2:2007; capable up to SIL 3

The certification is based on the report No. SLA_0055_2010TB1 in the valid version. This certificate entitles the holder to use the pictured Safety Approved mark.

Expiry date: 2017-08-04
Reference No.: G.SEB.BS.02.021.02.031

Gerhard M. Rieger
Augsburg, 2012-09-21

TÜV NORD
Safety Approved

ACS880-01
IEC 61508 SIL 3
IEC 61800-5-2 SIL 3
ISO 13849-1 PL e
IEC 62061 SILcl 3
SLA-0055/10

TÜV NORD Systems GmbH & Co. KG, Branch South, Haldenstr. 27, 86150 Augsburg, Germany

TÜV NORD

Certificate

No. SLA-0131/2009, Ver. 1.0

TÜV NORD Systems GmbH & Co. KG hereby certifies

ABB Oy
Hiomotie 13
FI-00381 Helsinki
Finland

that the safety functions module

FSO-11

as a plug-in module for the ABB industrial drive ACS880 series

is developed according to the following standards:

- IEC 61508 part 1, part 2, part 3: 2010; capable up to SIL 3
- IEC 61800-5-2: 2007; capable up to SIL 3
- ISO 13849 part 1: 2006, part 2: 2003; capable up to PL e (category 3)
- IEC 62061: 2005; capable up to SILcl 3

Beneath the integrated "Safe Torque Off (STO)" function within the industrial drive ACS880 series (see certificate No. SLA-0055/10), the additional safety functions "Safety Limited Speed (SLS)", "Safe Maximum Speed (SMS)", "Safe Stop Emergency (SSE)", "Safe Stop 1 (SS1)" and "Safe Brake Control (SBC)" can be realized with the plug-in safety functions module FSO-11.

The whole assembly can be used in safety applications up to SIL 3 according to IEC 61511. The released versions of the certified FSO-11 are given in the "tracking-list for released versions of the FSO-11". This list is an add-on to this certificate.

The certification is based on the report No. SLA-0131/2009TB-3 in the valid version. This certificate entitles the holder to use the pictured Safety Approved mark.

Expiry date: 2017-09-21
Reference No.: G.SEB.BS.02.021.03.031

Augsburg, 2012-09-21

Gerhard M. Rieger

TÜV NORD
Safety Approved

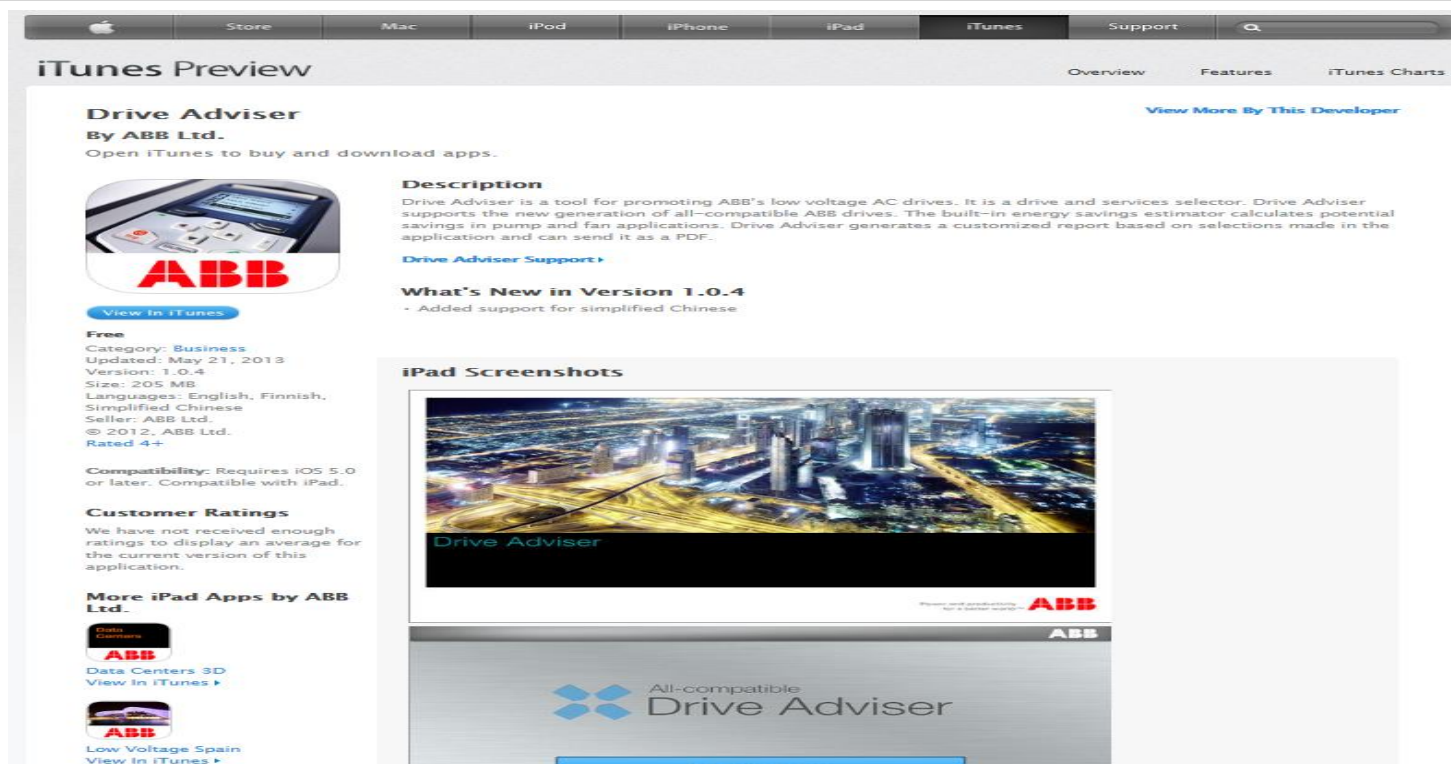
FSO-11
IEC 61508 SIL 3
IEC 61800-5-2 SIL 3
ISO 13849 PL e
IEC 62061 SILcl 3
SLA-0131/2009 V1.0

TÜV NORD Systems GmbH & Co. KG, Branch South, Haldenstr. 27, 86150 Augsburg, Germany



iPad 应用程序

iPad app



在iPad的App Store上搜寻：**drive adviser**或者输入如下链接网址：
<https://itunes.apple.com/us/app/drive-adviser/id584476662?mt=8>

ACS880主要内容

ACS880 Content

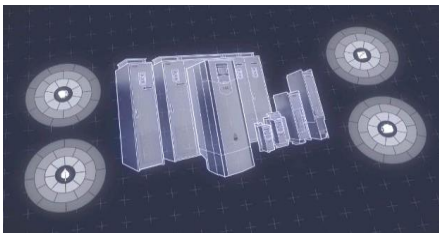


■ 概述



■ 产品选型信息

■ 特点和优势



■ 应用案例

ACS880 应用案例 – 造纸厂稀释水泵

ACS880 Application Cases – Dilution Water Pump



■ Background Information

- 瑞典造纸厂

■ Application

- 稀释水泵改造，**ACS880**取代阀门控制，每台每年的节能量达到**120MWh**左右，相当于可以节省**5-6万瑞典克朗（6-7,000欧元）**

■ Product

- **ACS880-01**



ACS880 应用案例 – 折叠纸盒生产线

ACS880 Application Cases – Folding Carton Converting



■ Background Information

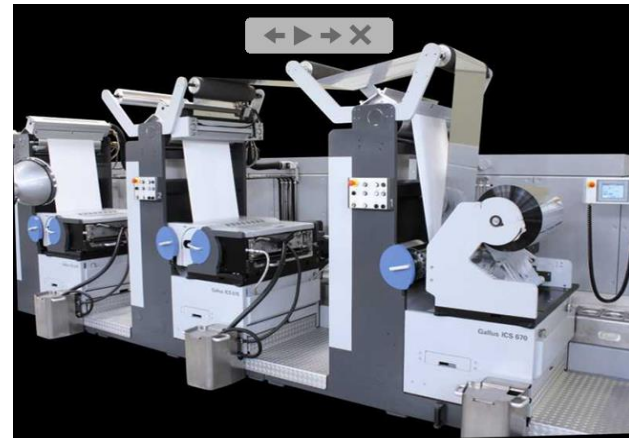
- 印刷包装机械公司

■ Application

- 折叠纸盒生产线

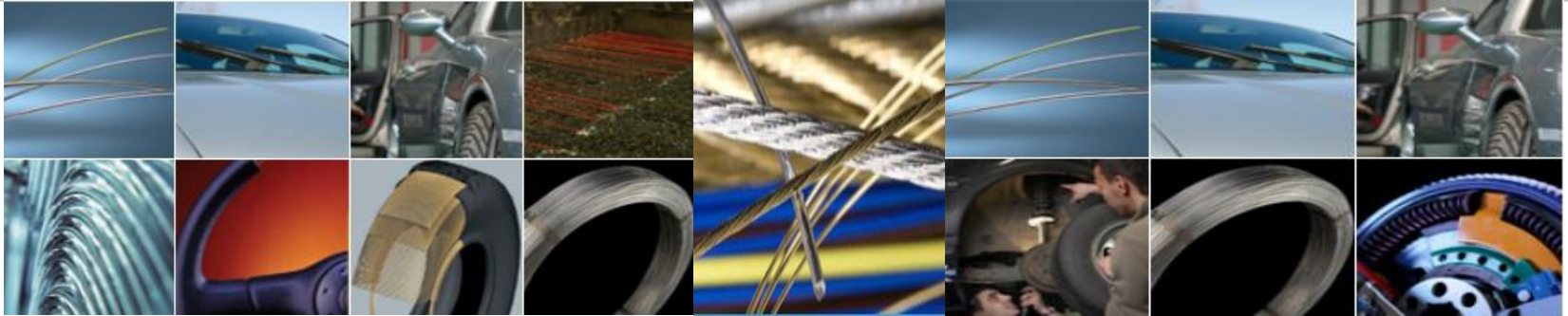
■ Product

- ACS880-01 控制同步电机



ACS880 应用案例 – 钢丝拉拔和镀膜

ACS880 Application Cases – Wire Drawing



■ Background Information

- 金属制品行业客户

■ Application

- 拉丝机

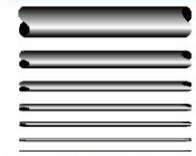
■ Product

- ACS880-01

Metal transformation



from wire rod
6.5 mm



1 μ m
to metal fibers



Advanced coatings



from traditional
coatings



Adhesion
Corrosion resistance
Wear resistance
Anti-fouling



to advanced
coatings



ACS880 应用案例 – 提升

ACS880 Application Cases – Crane



■ Background Information

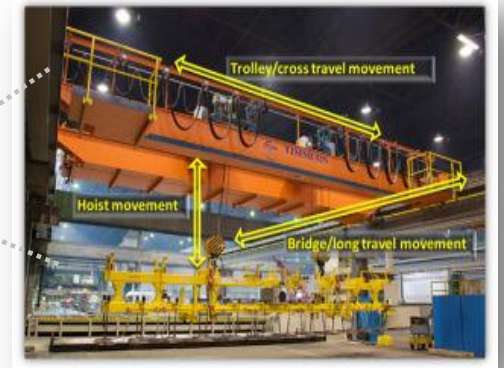
- 提升行业客户

■ Application

- 桥式起重机（起升、行走）

■ Product

- ACS880-01+标配STO+内置制动斩波器+提升软件



ACS880 应用案例 – 离心机

ACS880 Application Cases – Centrifuge



■ Background Information

- OEM客户

■ Application

- 离心机

■ Product

- ACS880-01 并排安装，结构紧凑

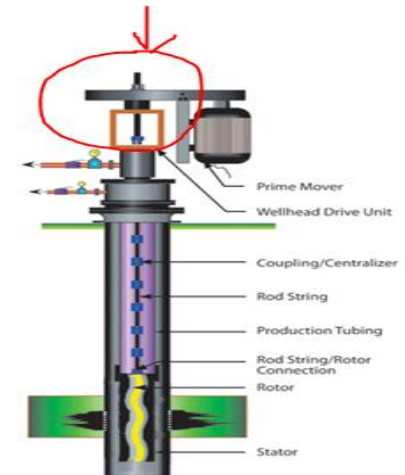


ACS880 应用案例 – 螺杆式抽油泵

ACS880 Application Cases – PCP



Replacement of wellhead drive unit by direct drive PM motor



■ Background Information

- 石化行业客户

■ Application

- 螺杆式抽油泵

■ Product

- ACS880-01 + N5200 (PCP/ESP软件)

ACS880 应用案例 – 切布机

ACS880 Application Cases – Cutting Machine



■ Background Information

- 纺织行业客户

■ Application

- 切布机设备

■ Product

- ACS880-01



ACS880 应用案例 – 立体车库

ACS880 Application Cases – Vertical Lifting Garage



■ Background Information

- 立体车库制造商

■ Application

- 立体车库

■ Product

- ACS880-01 + 提升软件



ACS880 应用案例 – 汽车轮胎测试设备

ACS880 Application Cases – Test Bench



■ Background Information

- 汽车轮胎测试设备制造商

■ Application

- 测试台

■ Product

- ACS880-01 + EtherCAT 总线通讯



宣传标语 Slogan

ACS800: 明日科技



ABB Industry Oy, Drives, PO Box 184, FIN-00381 Helsinki, Finland.
Tel. +358 10 222 000 Fax. +358 10 222 2287 www.abb.com/motorsdrives

ABB



ABB Industry Oy, Drives, PO Box 184, FIN-00381 Helsinki, Finland.
Tel. +358 10 222 000 Fax. +358 10 222 2287 www.abb.com/motorsdrives

ABB



ABB Industry Oy, Drives, PO Box 184, FIN-00381 Helsinki, Finland.
Tel. +358 10 222 000 Fax. +358 10 222 2287 www.abb.com/motorsdrives

ABB

ACS880: 创新驱动未来

Simplifying your world
without limiting
your possibilities.



ABB ACS880 荣获创新产品奖

ABB ACS880 Win Innovation Awards

ABB传动荣获创新产品奖

在由工业控制领域著名媒体gongkong.com举办的第十二届自动化年会上，ABB新一代工业传动ACS880荣获创新产品-工业传动产品专家奖。ABB传动的高可靠性、创新能力再次得到业内专家的一致认可与好评。

Gongkong.com是中国自动化领域最大的门户网站，由gongkong.com举办的自动化年度评选设立于2002年。这一评选推崇促进自动化发展的年度标志性事件、杰出人物、创新产品、成功案例以及优秀企业。

此次获奖的产品ACS880于2013年正式在中国市场上市。这款工业级的变频器是适用于全领域的新一代全能型低压交流传动。它采用通用架构，专为简化操作、优化能效和扩大产出而设计。这种新架构让ABB新一代工业传动不仅可以控制任何类型的交流电机，还能兼容所有主要的现场总线通讯协议及远程监控解决方案。

此次gongkong自动化年度评选中，ABB北亚区及中国负责人顾纯元博士获得年度CEO奖，包括ACS880在内的两款ABB产品荣获创新产品奖。



ABB传动荣获创新产品奖

新产品，新机会

New Products, New Opportunities



携手并进——更好、更大、更强

From Good to Better and Bigger – Stronger Together



Power and productivity
for a better world™

